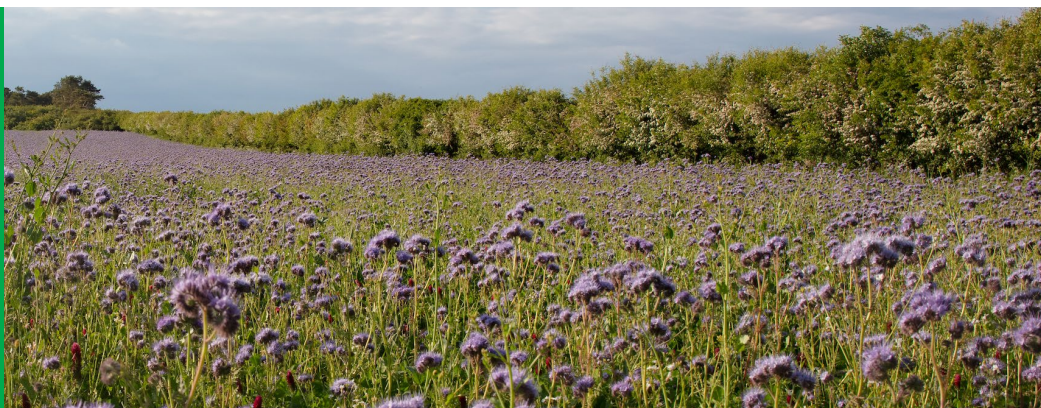


Technical Update

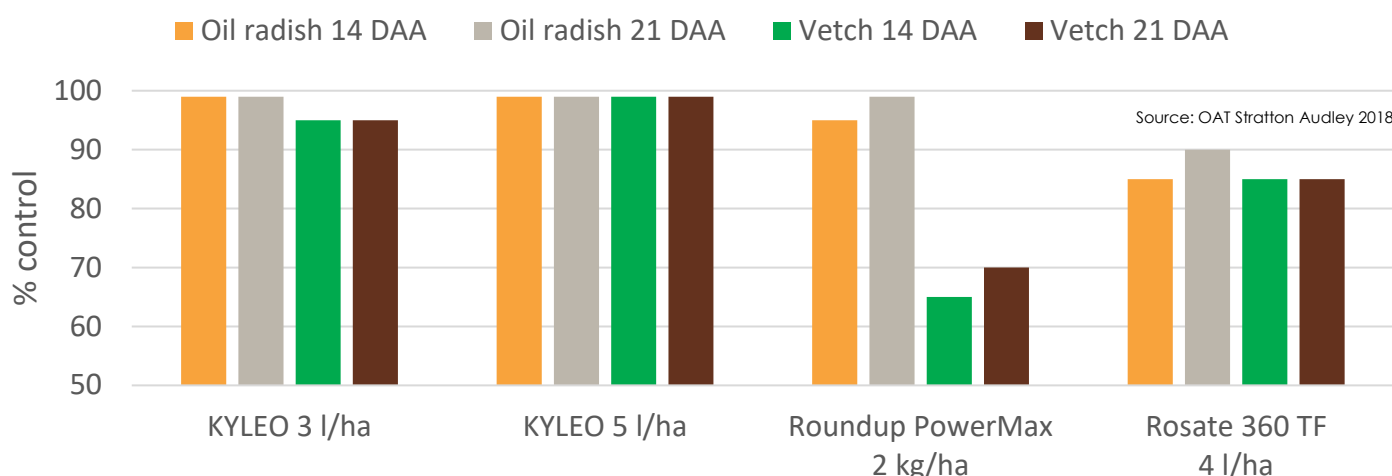


KYLEO – effective, reliable cover crop destruction

Destruction of catch crops and cover crops with dense canopies may not be straightforward:

- Straight glyphosate products may not deliver a thorough kill, **especially of mixtures containing vetches**.
- **KYLEO has a highly efficient surfactant system** and contains 2,4-D in addition to glyphosate, but it is still important to **maintain rates and maximise target coverage** to ensure effective and rapid destruction of all species in the mix.

Kyleo delivers superior cover crop destruction compared with glyphosate alone



Optimising applications

Application timing

- Apply during mild weather, **ideally early in the morning provided the foliage is dry**.
- DO NOT apply in late afternoon/early evening, or during periods of hot, dry weather.
- **Ensure good spray coverage of all species in cover crop mixtures** – apply in 150-200 l/ha water volume as a medium droplet using **low-drift air-inclusion nozzles**.

Spray mix preparation

- **Water conditioners may be beneficial** with all glyphosate formulations **where hard water is used for spraying** – add to tank and mix thoroughly to condition water before adding any glyphosate products (follow manufacturers' product-specific mixing guidelines and rates of use).

Maintain rates – apply KYLEO 5.0 l/ha

- Higher rates deliver faster kill of cover crops and any weeds present.
- Only reduce rates to 3.0 l/ha for more susceptible crops with low biomass and in ideal conditions.



Following crops & planting intervals

Crop to follow KYLEO application	Minimum planting/drilling delay
Wheat, maize	3 days
Barley	5 days
Oats, rye, triticale	7 days
Ryegrass	7 days (or 28 days if direct-drilled)
Lucerne, clover, cover crops	14 days (or 28 days if direct-drilled)
Peas, field beans, stubble turnips	21 days
Linseed, sugar beet, onions (drilled or sets), oilseed rape, potatoes, carrots, parsnips	28 days
Vegetables, sunflowers	60 days

KYLEO is the most effective & legal way to apply glyphosate & 2,4-D to stubbles or green cover on land not being used for crop production

It is ILLEGAL to tank-mix any 2,4-D with any glyphosate herbicide!

- Straight 2,4-D and/or coformulations containing 2,4-D designed for use in cereals and grassland are not authorised for use before planting, in stubbles or for crop destruction.
- Legality aside, tank-mixing straight glyphosate and 2,4-D herbicides will lead to an interaction between the salts in the formulations, which unavoidably locks-up some of the active substances and leads to sub-optimal control of difficult weeds.

FURTHER INFORMATION

Nufarm Technical updates are eligible for 2 BASIS CP points/year Ref: CP/128807/2324/g. Email claim to linda@basis-reg.co.uk

Kyleo contains 160 g/l 2,4-D + 240 g/l glyphosate.
Roundup PowerMax contains 720 g/kg glyphosate.
Rosate 360 TF contains 360 g/l glyphosate.

Kyleo is a trademark of Nufarm.
Roundup PowerMax is a trademark of Monsanto Technology LLC.
Rosate is a trademark of Albaugh UK Ltd.

Details of application rates and timings are given in Nufarm labels and product literature; both of which can be accessed from our website www.nufarm.com/uk. Alternatively, ring the Nufarm helpline on 01274 694714, Monday to Friday 9.00 - 17.00

Use plant protection products safely. Always read the label and product information before use. For label and safety information, refer to the Nufarm website www.nufarm.com/uk. Nufarm UK Ltd, Wyke Lane, Wyke, Bradford, BD12 9EJ.

